



Lighting Innovation with a Sustainable Focus



Use of Bat-Friendly Drivers in Special Application Products for Carlsbad Caverns, New Mexico USA

With over 30 years of experience, Lumascope has grown from its origins in Brisbane, Australia, into a global leader in innovative lighting solutions. Now a part of Hunter Industries, we continue to uphold our legacy of excellence with a strong focus on environmental responsibility, product durability, and social equity.



Sustainability Commitment

Overview

With over 30 years of experience, Lumascope has grown from its origins in Brisbane, Australia, into a global leader in innovative lighting solutions. Now a part of Hunter Industries, we continue to uphold our legacy of excellence with a strong focus on environmental responsibility, product durability, and social equity.

At the core of our sustainability efforts is our compliance with ISO 9001 and ISO 14001, ensuring we meet the highest standards in quality and environmental management. We're also advancing our sustainability initiatives by completing TM65 assessments for embodied carbon and TM66 for product circularity performance on both existing and new products. These certifications, combined with our dedication to product circularity, embodied carbon reduction, biodiversity protection, and social inclusion, guide our mission to create lighting solutions that benefit both people and the planet.



ISO 9001 and ISO 14001 Compliance

ISO 9001: Quality Management System

- **Exceeding Standards:** Our adherence to ISO 9001 highlights our unwavering commitment to delivering high-quality, reliable products.
- **Durability and Longevity:** Our products are built to last with long service lives and replaceable parts to minimise waste and enhance sustainability.
- **Custom Design and Testing:** We design and manufacture custom drivers, PCBs, firmware, and software, ensuring every luminaire meets rigorous performance standards. Each product undergoes thorough testing before shipment, guaranteeing the highest quality for our customers.
- **Material Excellence:** Our products are crafted from durable, sustainable materials like stainless steel and brass, which are resistant to corrosion.

*Only Lumascope China facility is ISO 14001 compliant

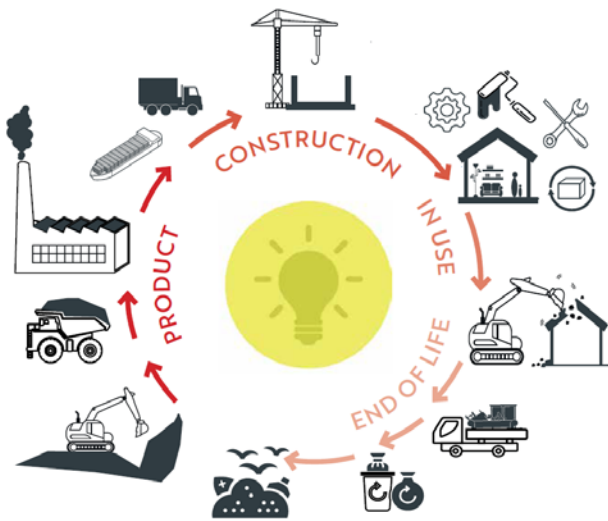
ISO 14001: Environmental Management System

- **Protecting the Planet:** Compliance with ISO 14001 demonstrates our proactive approach to reducing environmental impacts across our operations.
- **Sustainable Manufacturing:** We continuously assess and improve our processes to minimise waste, energy use, and emissions.
- **Responsible Material Sourcing:** We prioritise low-impact materials that contribute to reduced embodied carbon, supporting our goal of a 50% emissions reduction by 2030 (based on 2019 levels).
- **Environmental Care:** By adhering to strict environmental standards, we ensure that our operations and products align with global sustainability goals.

TM65 and TM66 Assessments for Embodied Carbon and Circularity

Lumascap has integrated TM65 embodied carbon and TM66 circularity performance assessments for our existing and new products, further supporting our sustainability goals.

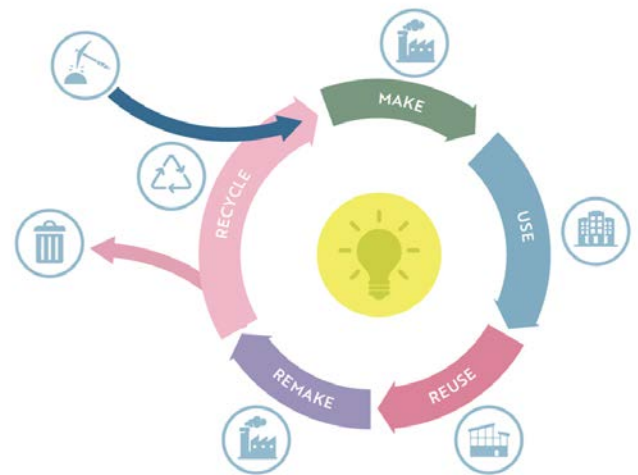
- **Embodied Carbon (TM65):** We measure and minimise the embodied carbon in our products, ensuring they have lower overall carbon footprints.
- **Circularity Performance (TM66):** We assess and optimise the circularity of our products, ensuring they're designed for a longer lifecycle, easy disassembly, and efficient maintenance.



Product Circularity and Durability

Sustainability is embedded in the design of our lighting solutions, many of which have replaceable components and are built to last.


- **Longevity and Replaceability:** Our products are designed for extended service life, with replaceable parts to enhance circularity and reduce the need for frequent replacements.
- **Premium Materials:** We use high-quality materials, such as stainless steel and brass, which provide exceptional durability and corrosion resistance, reducing the long-term environmental impact of our products.
- **Circular Design:** Our commitment to circularity extends through the entire product lifecycle, from design and manufacturing to end-of-life.



Commitment to Reducing Embodied Carbon and Greenhouse Gas Emissions

As part of the Hunter Family of Companies, Lumascape aligns with Hunter's commitment to reducing emissions by 50% by 2030. We support this goal by focusing on product longevity, sustainability, and material efficiency.

- **Longevity and Durability:** Our luminaires are engineered for superior durability and extended service life, reducing the need for replacements and minimising environmental impact over time.
- **Low-Carbon Materials:** We prioritise the use of materials with lower embodied carbon with comprehensive TM65 assessments ensuring we lower our environmental footprint.
- **Energy Efficiency:** Our lighting solutions are optimised for energy efficiency, reducing operational energy use and contributing to long-term carbon reduction.



Climate Impacts and GHG Emissions

GOAL
Reduce Scope 1 and Scope 2 emissions by 50% from the 2019 baseline by 2030

Light Pollution Mitigation and DarkSky™ Approved Lighting

Lumascape is committed to reducing light pollution through our DarkSky approved and compliant luminaires.

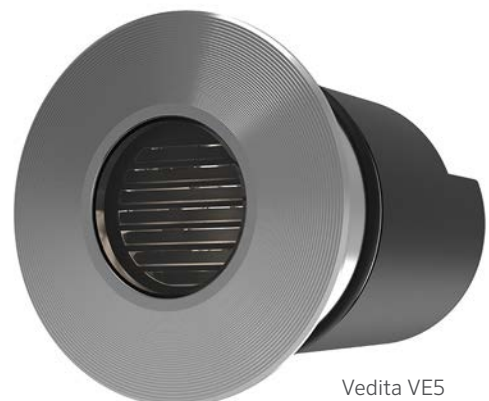
- **DarkSky Compliance:** Our outdoor lighting solutions minimise skyglow and light trespass, protecting natural night environments and enhancing human health.
- **Precision Optics Systems:** We design fixtures with innovative shielding and directional lighting to ensure illumination is concentrated only where it's needed.



Nero NE2



DARKSKY APPROVED
Reduces light pollution
Certified by DarkSky.org



Vedita VE5



DARKSKY APPROVED
Reduces light pollution
Certified by DarkSky.org

Biodiversity and Wildlife Protection

Our products are designed with the protection of wildlife and ecosystems in mind.

- **Turtle-Friendly LEDs:** Our Amber LEDs emit long-wavelength light, specifically above 560 nm, to minimise disruption to sea turtles during their nesting and hatching periods.
- **Bat-Friendly Drivers:** Our bat-friendly drivers are engineered to minimise disturbances to nocturnal species, ensuring the preservation of natural ecosystems.



Carlsbad Caverns, USA (products featuring bat-friendly drivers)

Plastic-Free Packaging

We're dedicated to eliminating plastic waste through the use of plastic-free packaging.

- **Sustainable Materials:** Our packaging is made from biodegradable, compostable, or recyclable materials, reducing environmental impact.



Celebrating Diversity to Foster a Collaborative Culture

We strive to create a diverse and inclusive workplace where all individuals are valued and respected.

- **Diverse Workforce:** We embrace a diverse workforce that reflects the global communities we serve.
- **Equitable Opportunities:** All employees are given equal access to growth, career development, and leadership roles.
- **Inclusive Culture:** We foster an inclusive culture where collaboration and innovation thrive.



A Commitment to Sustainability and Social Impact

As part of the Hunter family, Lumascope benefits from a company-wide commitment to sustainability.

- **Corporate Vision:** Hunter Industries shares our passion for environmental responsibility with policies that support sustainable manufacturing, responsible resource use, and social equity.
- **Shared Goals:** Together, we're committed to pushing the boundaries of innovation while minimising our environmental footprint.



Hunter[®]



LUMASCAPE

“We see sustainability as a powerful driver of innovation. Its principles give us new ideas for improving our products and our operations: how we can use more environmentally responsible materials, generate less waste, and create new ways to save water and energy. These goals are increasingly a priority in our own operations and for our customers, whether they’re working with us due to our best-in-class irrigation and outdoor lighting solutions, cutting-edge custom manufacturing, or advanced dispensing technologies.”

A handwritten signature in black ink, appearing to read 'G. R. Hunter'.

Gregory R. Hunter
CEO of Hunter Industries

UN Sustainable Development Goals (SDG) Alignment

At Lumascope, our sustainability efforts are deeply intertwined with several of the United Nations Sustainable Development Goals (SDGs). These global objectives guide our initiatives, helping us address critical environmental, social, and economic challenges while creating positive impacts through our operations and products.



SDG 5: Gender Equality

We recognise that achieving gender equality and empowering all individuals—regardless of gender or background—is essential to fostering a fair and innovative workplace. Our Diversity, Equity, Inclusion, and Belonging (DEIB) strategy is designed to ensure equal opportunities for all employees, reflecting our commitment to creating a diverse workforce that mirrors the communities we serve. Through inclusive hiring practices, equitable career development opportunities, and support for leadership diversity, we're actively reducing gender disparities and fostering an environment where everyone can thrive.



SDG 12: Responsible Consumption and Production

Sustainable production is at the heart of Lumascope's mission. We're committed to ensuring our products are designed, manufactured, and disposed of in ways that minimise environmental impact. Our TM66 assessments focus on enhancing the circularity of our products and promoting designs that support long lifecycles while enabling easy disassembly and simple maintenance. By using durable, long-lasting materials like stainless steel and brass, we reduce resource depletion and minimise waste. Furthermore, our efforts to eliminate plastic in our packaging, opting for biodegradable and recyclable materials, reduce our contribution to the global plastic pollution crisis, ensuring a more responsible approach to consumption and production.



SDG 13: Climate Action

As part of the global effort to mitigate climate change, Lumascope is focused on reducing greenhouse gas emissions across its operations and product lifecycle. By aligning with Hunter Industries' ambitious target of cutting emissions by 50% by 2030 (from 2019 levels), we're actively reducing our carbon footprint. Our TM65 assessments of embodied carbon allow us to measure and lower the environmental impact of our products at every stage of their lifecycle. In addition, we prioritise energy efficiency in our luminaires, which helps reduce operational energy consumption for our customers and contributes to long-term carbon reduction. By championing innovative, low-carbon solutions, we're making significant contributions to climate action.



SDG 14: Life Below Water

Lumascope is committed to protecting marine ecosystems and promoting biodiversity through our specialised lighting solutions. Our turtle-friendly LEDs are designed to minimise disruptions to marine life, particularly sea turtles, which rely on dark environments for nesting. These lighting solutions reduce the impact of artificial lighting in coastal areas, ensuring safer nesting conditions and healthier marine ecosystems. By prioritising wildlife-conscious designs, Lumascope supports the conservation of marine life and contributes to broader efforts to protect life below water.



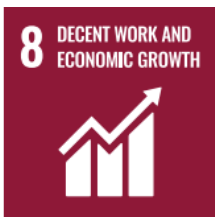
SDG 15: Life on Land

In addition to protecting marine environments, Lumascope plays an active role in preserving terrestrial ecosystems. Our bat-friendly drivers are engineered to reduce disturbances to nocturnal wildlife, especially bat populations, which are vital to maintaining healthy ecosystems. Through lighting solutions that minimise light pollution and preserve natural nighttime environments, we're helping to protect biodiversity and support ecosystems. By incorporating wildlife-sensitive design features, Lumascope demonstrates a commitment to safeguarding life on land, ensuring that our products coexist harmoniously with the natural world.



SDG 7: Affordable and Clean Energy

One of the standout commitments at Hunter Industries is the investment in renewable energy, particularly through the use of solar power across multiple facilities. This use of solar energy not only aligns with SDG 7: Affordable and Clean Energy but also significantly reduces the company's reliance on fossil fuels, contributing to a cleaner, more sustainable energy infrastructure. By investing in solar energy, Hunter Industries and Lumascope are actively lowering operational carbon footprints, setting a strong example of how industries can integrate clean energy solutions to power their businesses responsibly.



SDG 8: Decent Work and Economic Growth

Hunter Industries has long been recognised as an outstanding place to work, aligning with SDG 8: Decent Work and Economic Growth by offering policies and practices that prioritise employee well-being, professional development, and financial security. One notable initiative is the profit-sharing program, which allows employees to benefit directly from the company's success, ensuring that all team members are invested in the collective growth and prosperity of the organisation. This initiative fosters a culture of ownership and shared purpose.

Furthermore, Hunter's focus on creating an inclusive, positive work environment is demonstrated through various employee benefits, such as access to on-site gyms, comprehensive health and wellness programs, and education and training allowances. These benefits not only encourage a healthy work-life balance but also empower employees to pursue personal and professional development. This holistic approach to employee well-being ensures that Hunter Industries remains a model for decent work and sustainable economic growth.



SDG 3: Good Health and Well-Being

By prioritising employee health and wellness, Hunter Industries and Lumascope align with SDG 3: Good Health and Well-Being. Facilities include on-site gyms, health-focused amenities, and programs that promote both physical and mental wellness. These initiatives ensure that employees are supported in maintaining a healthy lifestyle, contributing to higher job satisfaction, improved productivity, and a more positive workplace culture overall.



SDG 4: Quality Education

To further support employee growth, Hunter Industries offers generous education and training allowances, aligning with SDG 4: Quality Education. These opportunities allow employees to advance their skills and pursue higher education, ensuring that they're well-equipped to excel in their roles and contribute to the company's ongoing innovation efforts. This focus on continuous learning fosters a culture of development and empowerment, benefiting both individuals and the organisation as a whole.



SDG 11: Sustainable Cities and Communities

The integration of TM65 assessments for embodied carbon and TM66 assessments for product circularity directly supports SDG 11: Sustainable Cities and Communities. Through these initiatives, Lumascope designs lighting solutions that not only reduce environmental impacts but also contribute to more sustainable urban and suburban environments. Our energy-efficient luminaires and focus on circular design principles enable communities to lower their carbon footprints, while enhancing urban infrastructure with lighting systems that are built to last and designed for sustainability.

By aligning with these SDGs, Lumascope and Hunter Industries are demonstrating how businesses can drive sustainable development—not just through product innovation but also by creating workplaces that foster well-being, growth, and a shared commitment to a better future. From renewable energy adoption to employee empowerment, our efforts show how corporate responsibility can be a powerful force for positive change.

Lumascapе's sustainability efforts are built on a foundation of quality, environmental responsibility, and social equity. Through our commitment to ISO 9001, ISO 14001, product circularity, TM65 and TM66 assessments, and biodiversity protection, we're dedicated to creating lighting solutions that contribute to a brighter, more sustainable future. Guided by Hunter Industries' enduring legacy of innovation and forward-thinking vision, we'll continue to push the boundaries as we redefine what's possible.





ARCHITECTURAL & FACADE LIGHTING
Learn more. Visit lumascape.com

 **LUMASCAPE**